

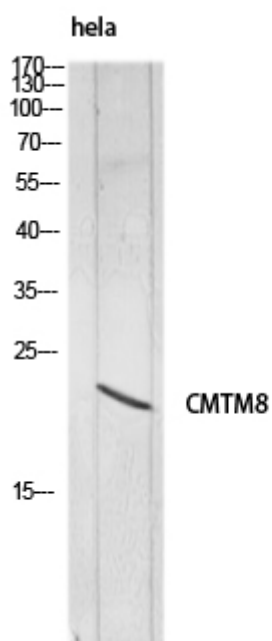


# CMTM8 Polyclonal Antibody

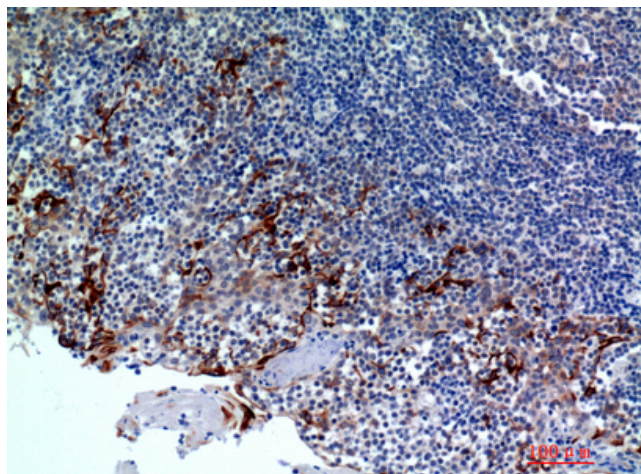
<b>Catalog No</b>	YP-Ab-16080
<b>Isotype</b>	IgG
<b>Reactivity</b>	Human;Rat;Mouse;
<b>Applications</b>	WB;IHC;IF;ELISA
<b>Gene Name</b>	CMTM8
<b>Protein Name</b>	CKLF-like MARVEL transmembrane domain-containing protein 8
<b>Immunogen</b>	The antiserum was produced against synthesized peptide derived from the Internal region of human CMTM8. AA range:101-150
<b>Specificity</b>	CMTM8 Polyclonal Antibody detects endogenous levels of CMTM8 protein.
<b>Formulation</b>	Liquid in PBS containing 50% glycerol, 0.5% BSA and 0.02% sodium azide.
<b>Source</b>	Polyclonal, Rabbit,IgG
<b>Purification</b>	The antibody was affinity-purified from rabbit antiserum by affinity-chromatography using epitope-specific immunogen.
<b>Dilution</b>	WB: 1/500 - 1/2000. IHC-p: 1:100-1:300. ELISA: 1/10000.. IF 1:50-200
<b>Concentration</b>	1 mg/ml
<b>Purity</b>	≥90%
<b>Storage Stability</b>	-20°C/1 year
<b>Synonyms</b>	CMTM8; CKLFSF8; CKLF-like MARVEL transmembrane domain-containing protein 8; Chemokine-like factor superfamily member 8
<b>Observed Band</b>	20kD
<b>Cell Pathway</b>	[Isoform 1]: Membrane; Multi-pass membrane protein.; [Isoform 2]: Cytoplasm. Nucleus.
<b>Tissue Specificity</b>	Highly expressed in liver and pancreas.
<b>Function</b>	similarity:Belongs to the chemokine-like factor family.,similarity:Contains 1 MARVEL domain.,tissue specificity:Highly expressed in liver and pancreas.,
<b>Background</b>	This gene belongs to the chemokine-like factor gene superfamily, a novel family that is similar to the chemokine and the transmembrane 4 superfamilies. This gene is one of several chemokine-like factor genes located in a cluster on chromosome 3. This gene acts as a tumor suppressor, and plays a role in regulating the migration of tumor cells. The encoded protein is thought to function as a negative regulator of epidermal growth factor-induced signaling. Alternative splicing results in multiple transcript variants encoding different isoforms. [provided by RefSeq, Feb 2016],
<b>matters needing attention</b>	Avoid repeated freezing and thawing!

**Usage suggestions**

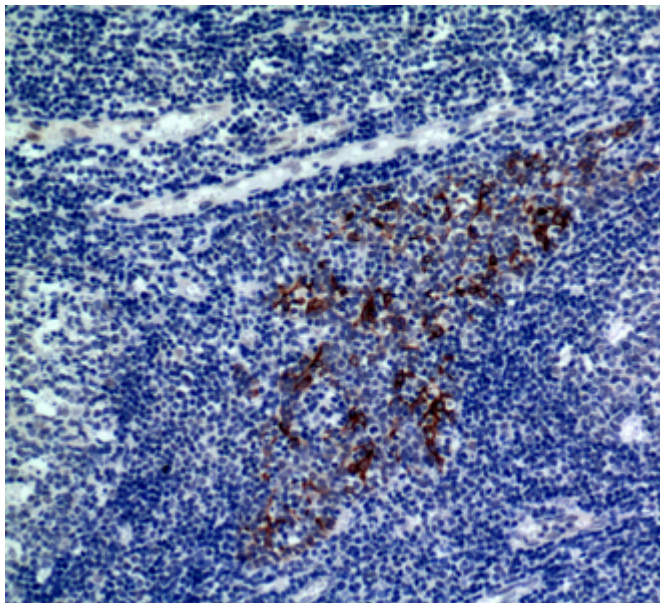
This product can be used in immunological reaction related experiments. For more information, please consult technical personnel.

**Products Images**

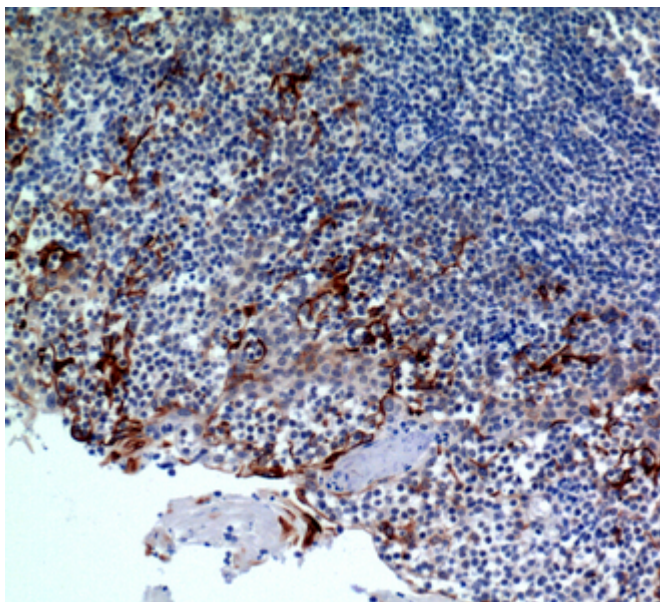
Western blot analysis of hela lysis using CMTM8 antibody. Secondary antibody(catalog#:RS0002) was diluted at 1:20000



Immunohistochemical analysis of paraffin-embedded human-tonsils, antibody was diluted at 1:200



Immunohistochemical analysis of paraffin-embedded human-tonsils, antibody was diluted at 1:200



Immunohistochemical analysis of paraffin-embedded human-tonsils2, antibody was diluted at 1:100